

W.P.S

Manufacturers of fine furniture and
interior cabinetry since 1886

**A new signature venue created by Walter P. Sauer in collaboration
with award-winning designers and architects**



Fine dining at a private university club in New York City.

“Design is challenge-solving.” — Aaron Marcus, Designer

Walter P. Sauer, America’s premier maker of fine furniture, has created an entire floor for a private Ivy League club in New York City. This floor, consisting of a bar, dining room, and adjoining hallways, serves as the club’s signature venue. It is here that the club entertains alumni and important guests.

In creating this exceptional space, W P. S partnered with renowned English interior designer Guy Oliver of Oliver Laws on London’s Savile Row and the premier international architecture firm of RMJM Hillier.



Louis Krefsky, Director of Project Management, and Anthony Morris, owner and CEO, review shop drawings.

Bar Room: Design, Manufacture, and Installation

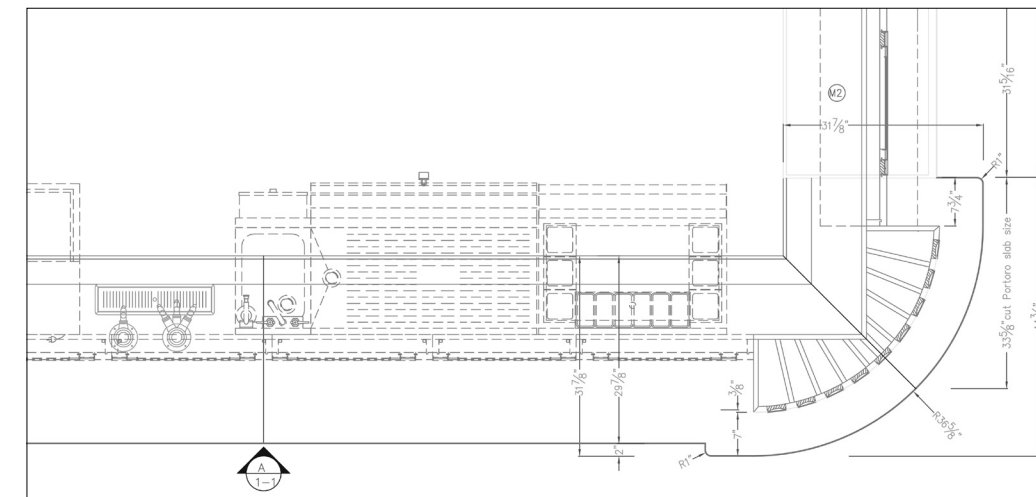


Constructed out of solid lumber and veneer in macassar ebony with a black portoro marble countertop, the bar incorporates Art Deco and Ivy League Collegiate elements. The stools are made of ebonized walnut and leather upholstery.

Walter P. Sauer is unique among cabinetmakers. In continuous existence since 1886, its guild-like approach to manufacturing allows it to create pieces of exceptional beauty and craftsmanship. Through its labor-intensive approach, the workshop is able to deliver a cohesive product with the greatest attention to detail.

Located in Brooklyn, New York, W P. S is a group of artisans trained around the world. Their vast expertise allows the shop to do many things in-house beyond traditional joinery, including working with upholstery, leather, glass, and ferrous and non-ferrous metals.

A shop drawing in plan view of the bar drafted by W P. S craftsmen.



Whenever the workshop needs to go out of house on a project, it takes complete responsibility for coordinating the other trades involved and for overseeing the design and installation of any outside parts. W P. S’s interiors are therefore distinguished by a superior cohesiveness resulting from its attention to the project as a whole.

In creating this distinguished Ivy League club venue, the workshop did a complete and total renovation. This included architectural millwork, painted moldings, new doors, built-in cabinetry, freestanding furniture, upholstery, frames for artwork and photographs, and the refurbishment of a historic rowing scull.



Mike DeFrenza, Chief Installer at W P. S, installs banquette seating.

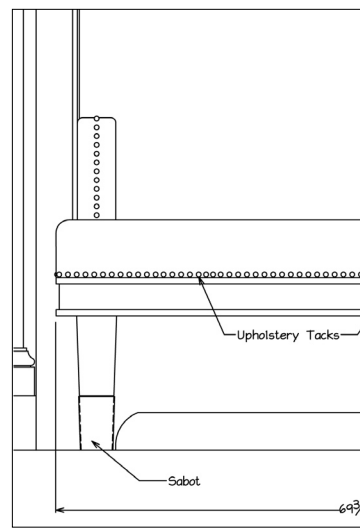
Walter P. Sauer is structured like a traditional European guild. Its artisans come from all over the world and have been trained by generations of craftspeople. Their expertise allows Walter P. Sauer to manufacture a wide range of items beyond traditional joinery.



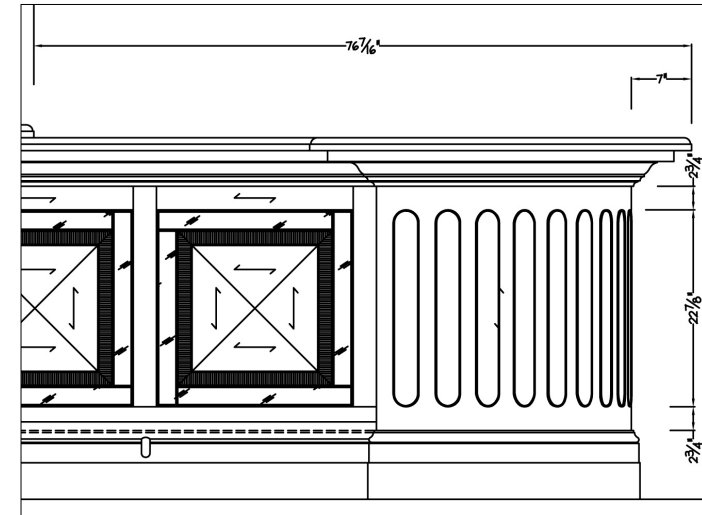
Detail of a leather banquette and the wainscoting along the bar wall.



Part of the leather banquettes that line the bar wall. In front is an ebony dining table and to the right is a privacy wall of walnut, stainless steel, and glass. Framed photographs line the wood-paneled wall behind.



A shop drawing of the banquette seating.



A shop drawing of the bar corner.



Details of the bar corner constructed of solid lumber and veneer in macassar ebony. The bar corners contain metal insets with fluted details. A custom-made lamp is recessed into the black portoro marble counter.

W P. S partnered with the award-winning English designer **Guy Oliver** and the celebrated architecture firm of **RMJM Hillier** on this project. Together they designed this signature floor where the club hosts alumni and important guests.



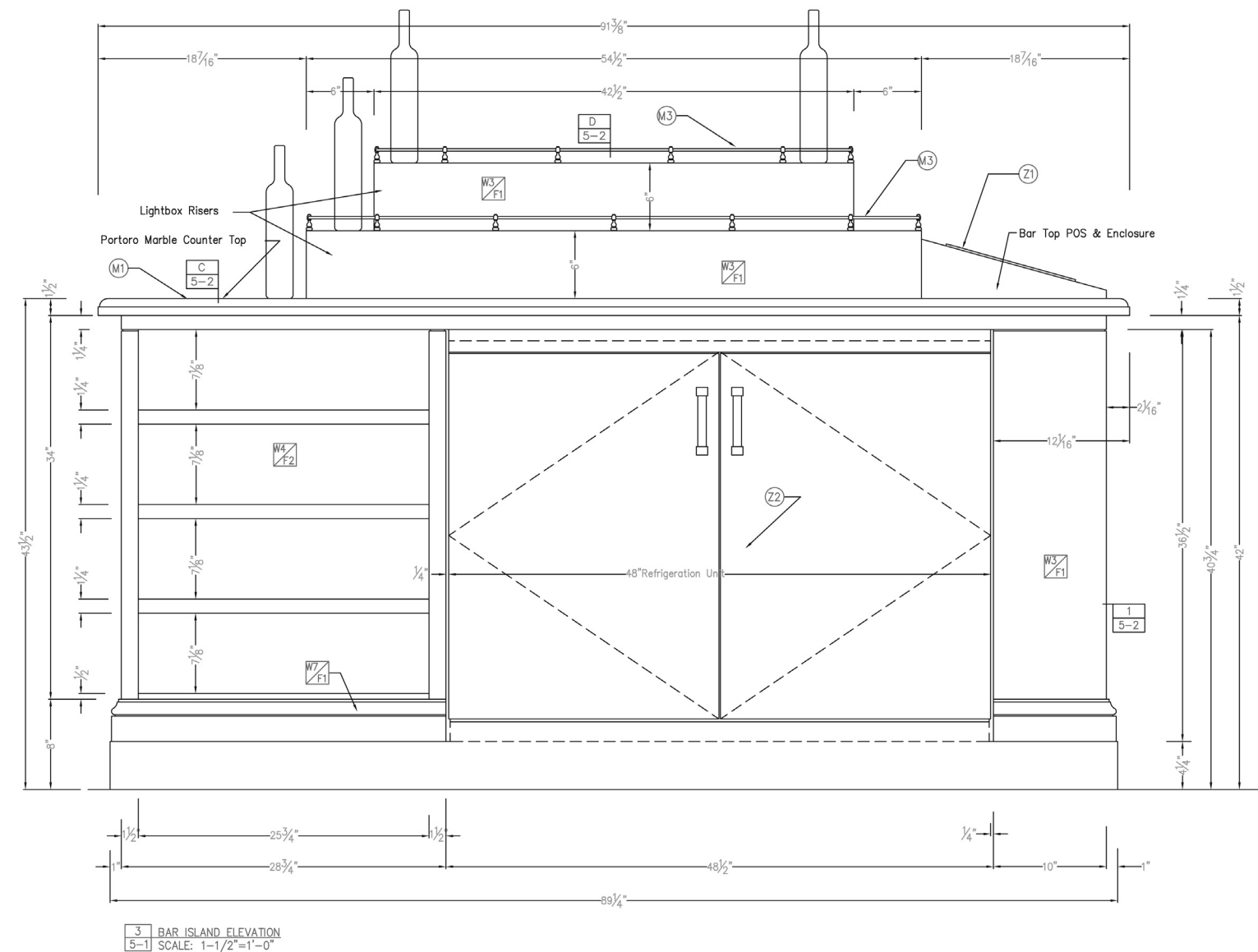
Detail of the bar's privacy wall, which is constructed of ebonized walnut, polished stainless steel, and glass.

The bar's center island with a light-box gallery for bottle display. It is constructed of macassar ebony, polished stainless steel, glass, and black portoro marble.



Interpreting a two-dimensional drawing to create a three-dimensional object requires great expertise. The artisan must account for both the architect's vision and the functional needs of the client.

A shop drawing of the bar's center island and the light-box gallery.



Fine Dining Room: Design, Manufacture, and Installation

“Attention to detail is the essence of all craftsmanship. True craftsmanship is the foundation of the beauty in all things made by hand.” — Anthony Morris

Inspired by fine clubs and hotels he had created around the world, Guy Oliver came to Walter P. Sauer with his vision for a period piece. W P. S, Oliver, and RMJM Hillier collaborated to make the rooms appear as if they have been in existence for over a century, but simply have been kept in excellent condition. The style is a mixture of Art Deco, Ivy League Collegiate, and Tudor Revival.

Walter P. Sauer collaborated with the architect and designer on three fundamental aspects of the project: selecting and acquiring materials, coordinating the engineering and design of the space to ensure structural integrity, and determining the aesthetics of interior elements, such as color, shape, finish and other details. Because of this intense collaboration the entire floor achieves a cohesiveness it would not have attained had it been completed by several individual suppliers.



The fine private dining room at the university club with wood paneling of English brown oak.

Installation of case molding wall panels.



Detail of a dining chair with contrasting piping. The chairs are an evolved synthesis of Danish modern and classic club chair design.



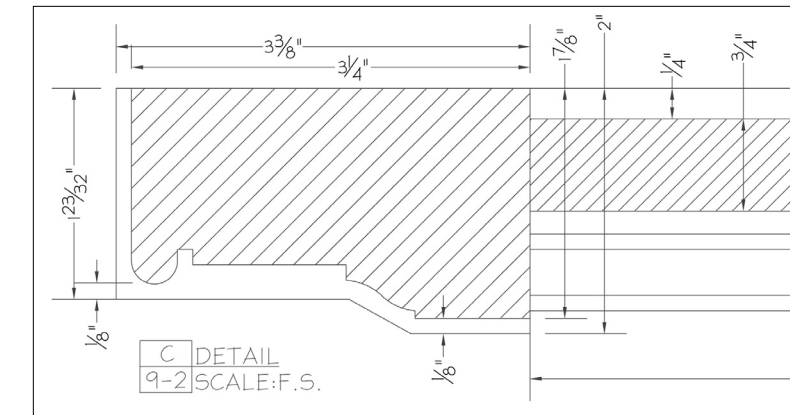
Owner and CEO Anthony Morris pays a site visit to the dining room under construction.

W P. S's serious and consistent attention to detail is fundamental to its success. The workshop's senior management is involved at every level of a project.

The dimensions and placement of all interior elements are carefully measured and reviewed to ensure overall structural integrity.



Built from scratch, the rooms have been created to look as if they have been in existence for over a century and to reflect the university's time-honored traditions.



A shop drawing showing wainscoting detail.



Design Associate Alex Rosenhaus reviews shop drawings.



Pictured in this wide-angle shot are wall paneling, wainscoting, picture frames, banquette-seating, tables, and chairs, all produced by W.P.S.

**“Design is an integrative process that
seeks resolution (not compromise)
through cross-disciplinary teamwork.”**

**— Michael S. Smith, Interior Designer
and CEO of Michael S. Smith, Inc.**

© 2010 by Walter P. Sauer

Text: Talia Bloch

Photography © 2010 by Todd Weinstein
www.onclicknyc.com

Art Direction, Layout and Design: Ralph Lichtensteiger
www.onclickberlin.com



Left to right: Louis Krefsky, Director of Project Management; Scott Brogan,
Account Executive and Sales Representative; Mike DeFrenza, Chief Installer;
Anthony Morris, Owner and CEO